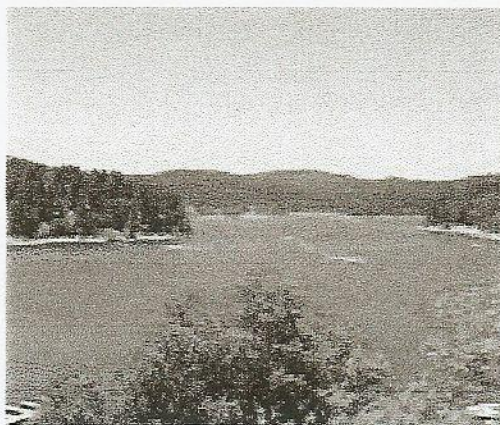


**LAKE ARROWHEAD, CA.**

Lake Arrowhead is just 90 miles east of downtown Los Angeles and a half-hour drive from San Bernardino on the "Rim of the World Highway," leading to Lake Arrowhead and designated as a national scenic byway, providing magnificent views reaching to the Pacific Ocean. Located at an altitude of 5,106 feet, this beautiful and picturesque lake community is nestled in a magnificent forest setting which surrounds a 784-acre private lake. The fresh mountain air and four-season climate is unmatched in Southern California.

Lake Arrowhead is man-made and was originally created in the early 1900's as a reservoir. State laws, however, later prohibited its use as a reservoir and in the 1920's a small alpine village was erected on the South shore. This has since been replaced with a wonderful lakefront shopping center and the beautiful Lake Arrowhead Resort. Blue Jay Village, located nearby is also a fine shopping center.

There are 10,710 lots in Arrowhead Woods where property ownership carries with it the right to use the lake for boating and fishing. The year-round population is about 13,000. Sixty percent of the residents are second homeowners who enjoy their mountain home on weekends and during vacation time. A segment of our homeowners use their homes for home-based businesses. This way they can



enjoy the four-season climate and still be within two hours of all Southern California cities.

There is one high school, one junior high school and two elementary schools. All are California Distinguished Schools.

Mountain Community Hospital is a 24-hour hospital which includes an emergency room, skilled nursing facility, medical offices and a wide range of medical specialties.

Lake Arrowhead Country Club has an 18-hole championship golf course, swimming pool and 7 tennis courts. The Lake Arrowhead Yacht Club is open during the summer months and is a mecca for sail boat enthusiasts. Trout and bass fishing is also a popular year-round sport as well as water skiing during the summer months. Nature walks and mountain trails for hiking are a favorite pastime for those who love the outdoors. The area also has several fine restaurants. For skiers and snowboarders, Snow Valley is just 25 minutes away.

Ontario International Airport is one hour from Lake Arrowhead which allows easy access to world-wide-travel.

Lake Arrowhead is a one of a kind destination in Southern California.

**For More Information, contact:**  
Lake Arrowhead Communities  
Chamber of Commerce,  
P.O Box 219  
Lake Arrowhead, CA 92352  
Or call (909)337-3715.

*At a glance...*

**LAKE ARROWHEAD**

**LOCATION:** 9,215 acres in the San Bernardino National Forest

**NEAREST CITY:** San Bernardino, 20 miles south; Los Angeles, 90 miles west; Palm Springs, 72 miles east

**AIRPORT:** Ontario International, one hour from Lake Arrowhead

**ALTITUDE:** 5,106 feet

**WEATHER:** 4 seasons, mild winters

**TOTAL DWELLINGS:** 10,710

Full time-4,285

Part time-6,425

**SCHOOLS:** Rim of the World High School, Mary Putnam Henck Intermediate, Lake Arrowhead Elementary and Grandview Elementary.

**THE LAKE:** 784 acres, private access reserved for homeowners, 14 miles of shoreline, average depth 100 feet, deepest spot 185 feet.

**BEACH CLUBS:** Private access for homeowners. Tavern Bay Beach Club, Burnt Mill Beach Club, Grass Valley Park.